



Checkup Report

https://goker.me/ - 2025-12-15

TARGET URL	COMPETITORS	SEARCH TERMS
https://goker.me/	https://goker.art/ https://goker.dev/	goker

NOTICE / DISCLAIMER

This report was automatically generated using a comprehensive analysis tool developed as part of an ongoing academic study.

The findings and scores are provided as a structured summary; for detailed panel outputs, methodology, or deeper interpretation of the results, please contact **goker@kodkafa.com**.

There are no restrictions on sharing this report with third parties. However, since the underlying academic work is still in progress, we kindly request that the report is not published publicly.

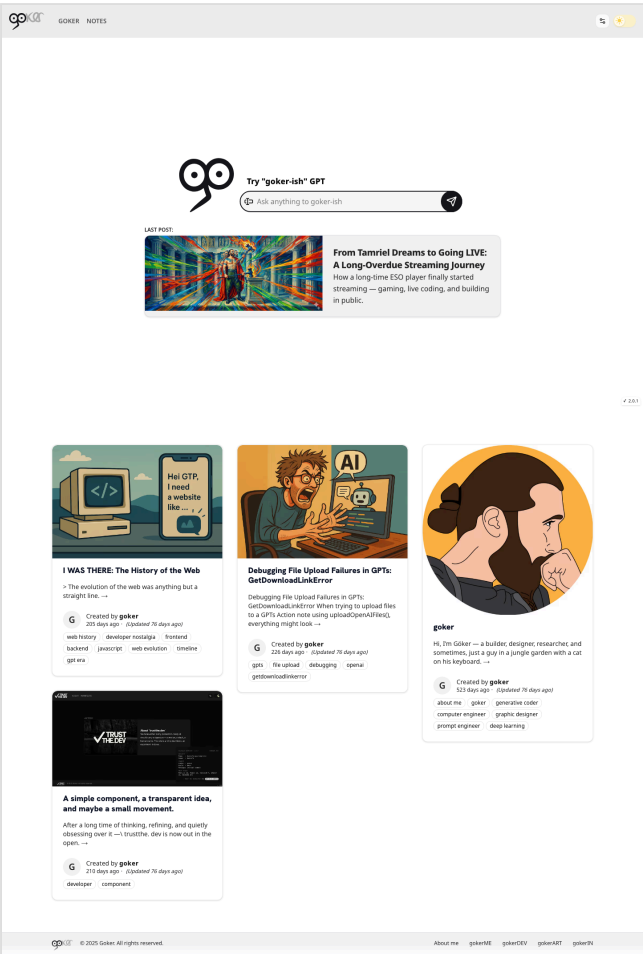
KODKAFA Checkup Report

PRIMARY: GOKER VS COMPETITORS

Generated: 2025-12-15

Profile: default

- Primary site: <https://goker.me/>
- Competitor 1: <https://goker.art/>
- Competitor 2: <https://goker.dev/>



1. Executive Summary

1.1 CONTEXT & OBJECTIVE

This report provides a comprehensive diagnostic analysis of the primary website, covering 17 artifact types across 13 scoring panels. The analysis follows a "diagnostic panel" methodology, examining each critical dimension of web health.

1.2 OVERALL HEALTH SNAPSHOT

Lab Performance Scores (Lighthouse): - Performance: 84.0 - Accessibility (Lighthouse): 100 - Best Practices: 100 - SEO: 100

Content Metrics: - Word count: 233 - Readability (Flesch): 33.4 - Sentences: 9

Domain Trust: - Domain age: 13.0 years - Registrar: Name.com, Inc.

1.3 KEY STRENGTHS

- **Social Score:** 100/100
- **A11Y Score:** 91/100
- **Technical Score:** 90/100
- **Performance Lab Score:** 84/100
- **Domain Score:** 80/100

1.4 KEY RISKS / GAPS

- **Ux Score:** 60/100 - Needs immediate attention
 - **Security Score:** 55/100 - Needs immediate attention
 - **Content Score:** 50/100 - Needs immediate attention
 - **Tracking Score:** 50/100 - Needs immediate attention
 - **Mobile Score:** 50/100 - Needs immediate attention
-

2. Critical Findings (Primary Site)

This section highlights the most important issues discovered during analysis, prioritized by business impact.

CRITICAL ISSUE #1 – VERY DIFFICULT READABILITY

Observation

Flesch Reading Ease score of 33.4 indicates college-level reading difficulty. Most web users prefer content at 8th-grade level (60-70 Flesch score).

Why it matters

Complex content increases bounce rate and reduces time-on-page. Users struggling to understand content are less likely to convert.

Recommendation

- Break long sentences (aim for 15-20 words avg) - Use simpler vocabulary where possible - Add more white space and bullet points - Consider readability tools like Hemingway Editor

CRITICAL ISSUE #2 – ACCESSIBILITY VIOLATIONS

Observation

1 critical/serious accessibility violations found affecting 6 elements.

Why it matters

- Legal risk (ADA/WCAG compliance) - Excludes users with disabilities (~15% of population) - Negative SEO impact - Poor brand perception

Recommendation

Priority fixes: - **color-contrast**: Ensure the contrast between foreground and background colors meets WCAG 2 AA minimum contrast ratio thresholds (serious)

CRITICAL ISSUE #3 – MISSING SECURITY HEADERS

Observation

Critical security headers missing: CSP, X-Frame-Options, X-Content-Type-Options, Referrer-Policy

Why it matters

- Vulnerability to XSS attacks - Risk of clickjacking - Risk of MIME type sniffing - Leakage of user data via referer - Reduced trust signals for browsers

Recommendation

Add the missing security headers in web server config:

```
Content-Security-Policy: default-src 'self'  
X-Frame-Options: SAMEORIGIN  
X-Content-Type-Options: nosniff  
Referrer-Policy: strict-origin-when-cross-origin
```

3. Panel-by-Panel Deep Dive (Primary Site)

Detailed analysis of each diagnostic panel for the primary website.

3.1 CONTENT & STRUCTURE

URL: https://goker.me/



Site ID: goker-me

Key Metrics:

METRIC	VALUE
Word Count	233
Sentence Count	9
Paragraph Count	9
Avg Sentence Length	24.33 words
Avg Paragraph Length	11.11 words
HTML/Content Ratio	0.010

METRIC	VALUE
H1 Headings	1
H2 Headings	1
H3 Headings	4
Internal Links	52
External Links	10
Unique Links	39
Images	9
Images with Alt	9

Analysis:

-  **Low content volume:** Content is thin (<300 words). Search engines prefer 500-2000+ words for ranking.
-  **Proper H1 usage:** Single H1 heading follows best practices.

Next Steps: - Expand content to 800-1500 words with valuable information

3.2 KEYWORD & SIMILARITY

Analysis of content alignment with target keywords:

Keyword: "goker"

CONTEXT	SIMILARITY	EXACT MATCHES	DENSITY
Body Text	0.396	9	0.04000
Link Text	0.410	12	0.05000
Headings	0.228	2	0.03774

3.3 ACCESSIBILITY (WCAG COMPLIANCE)

Summary:

CATEGORY	COUNT
Violations	1
Passes	42
Incomplete	2
Inapplicable	47

Top Violations:

1. Ensure the contrast between foreground and background colors meets WCAG 2 AA minimum contrast ratio thresholds - Impact: **serious** - Rule ID: **color-contrast** - Elements affected: 6 - Help: <https://dequeuniversity.com/rules/axe/4.10/color-contrast?application=axeAPI>

Remediation Priority: - 1 serious issues should be addressed soon

3.4 SOCIAL & SHARING METADATA

Basic Meta Tags:

TAG	VALUE	PRESENT
Title	7 chars	✓
Description	108 chars	✓
Canonical	https://goker.me	✓

Open Graph:

PROPERTY	VALUE	PRESENT
og:title	7 chars	✓
og:description	108 chars	✓
og:image	https://goker.me/api/og-image?src=%2Fplaceholder.jpg	✓
og:type	website	✓
og:url	https://goker.me	✓

Twitter Cards:

PROPERTY	VALUE	PRESENT
twitter:card	summary_large_image	✓
twitter:title	7 chars	✓
twitter:description	108 chars	✓
twitter:image	https://goker.me/api/og-image?src=%2Fplaceholder.jpg	✓

Completeness Flags: - Basic Meta: ✓ Complete - Open Graph: ✓ Complete - Twitter Cards: ✓ Complete

3.5 PERFORMANCE – LAB (LIGHTHOUSE)

Category Scores:

CATEGORY	SCORE	RATING
Performance	84.0	Needs Improvement
Accessibility	100	Good
Best Practices	100	Good
SEO	100	Good

Core Web Vitals:

METRIC	VALUE	SCORE	TARGET
First Contentful Paint (FCP)	1.7 s	92.0	<1.8s
Largest Contentful Paint (LCP)	4.1 s	47.0	<2.5s
Total Blocking Time (TBT)	30 ms	100	<200ms
Cumulative Layout Shift (CLS)	0.001	100	<0.1
Speed Index	4.2 s	77.0	<3.4s
Time to Interactive (TTI)	4.1 s	86.0	<3.8s

Top Optimization Opportunities:

- 1. Reduce unused JavaScript

3.6 PERFORMANCE – FIELD (CRUX REAL USER DATA)

Note: The CrUX Field Data module was not executed for this snapshot.

3.7 VISUAL & COLOR SYSTEM

Color Palette Detected (Top 5, 93.7% coverage):

COLOR	HEX	USAGE
 #fefefe	#fefefe	71.5%
 #ececec	#ececec	9.7%
 #cfc1b6	#cfc1b6	4.5%
 #201713	#201713	4.2%
 #384d4d	#384d4d	3.8%

Visual Balance & Contrast: - Dominant Background: #fefefe - Light/Dark Balance: 86% Light / 14% Dark -
Heuristic: Light Background Soft

3.8 TECHNICAL HEALTH

✔ No console errors detected.

⚠ **Security Check:** Missing critical headers (CSP, XFO, CSP, X-Frame-Options, X-Content-Type-Options, Referrer-Policy) impact technical score.

3.9 SECURITY & HTTPS

HTTPS Status: ✔ Secure

Security Headers:

HEADER	STATUS	VALUE
Strict-Transport-Security	✔	max-age=63072000
Content-Security-Policy	✗	''
X-Frame-Options	✗	''
X-Content-Type-Options	✗	''
Referrer-Policy	✗	''

3.10 DOMAIN & TRUST SIGNALS

Registration Details:

- **Registrar:** Name.com, Inc.
- **Creation Date:** 2012-11-28T09:19:24+00:00Z
- **Expiration Date:** 2026-11-28T09:19:24+00:00Z
- **Domain Age:** 13.0 years
- ✔ Established domain (>5 years) signals trust.

3.11 INFORMATION ARCHITECTURE

Navigation Map (Header)

ORDER	LABEL	HREF	DOM DEPTH
1	GOKER	/goker	7
2	NOTES	@goker	7

Average primary navigation DOM depth: 7.0. Navigation elements are accessible at a reasonable DOM depth.

Sitemap Coverage

Note: No sitemap.xml was found for this site. Consider adding an XML sitemap and registering it in search consoles.

3.12 UX & CONVERSION

Layout Analysis:

Forms Detected: 1 - Form unnamed : 2 elements (Lead Capture (inferred): prompt)

3.13 TRACKING & PRIVACY

Analytics & Tracking: -  Vercel Analytics

4. Keyword & Similarity Analysis (Cross-Site)

Comparison of content alignment with target keywords: **goker**

KEYWORD: GOKER

METRIC	GOKER.ME	GOKER.ART	GOKER.DEV
Body Similarity	0.396	0.220	0.244
Body Density	0.040	0.051	0.075
Heading Similarity	0.228	0.334	0.283
Exact Matches	9	9	4

5. Competitive Comparison

HEAD-TO-HEAD analysis against competitors.

5.1 CONTENT VOLUME & STRUCTURE

METRIC	GOKER.ME	GOKER.ART	GOKER.DEV
Word Count	233	185	50
Readability	33.4	21.8	59.6
H1 Count	1	1	1
HTML Ratio	0.010	0.009	0.005

5.2 PERFORMANCE (LAB)

METRIC	GOKER.ME	GOKER.ART	GOKER.DEV
Performance	84.0	84.0	86.0
LCP (s)	4.1 s	4.2 s	3.7 s
CLS	0.001	0.001	0.001

5.3 SOCIAL PRESENCE

METRIC	GOKER.ME	GOKER.ART	GOKER.DEV
OG Tags	✓	✓	✓
Twitter Cards	✓	✓	✓

5.4 NAVIGATION & SITEMAP COVERAGE

METRIC	GOKER.ME	GOKER.ART	GOKER.DEV
Sitemap present	No	No	No
Total sitemap URLs	0	0	0
Linked from homepage (count)	N/A	N/A	N/A
Linked from homepage (%)	N/A	N/A	N/A
Homepage nav link count (header)	2	6	5
Homepage nav depth (median)	7	7	7

5.5 VISUAL SYSTEM

METRIC	GOKER.ME	GOKER.ART	GOKER.DEV
Dominant Color	#fefefe	#fefefe	#fefefe

METRIC	GOKER.ME	GOKER.ART	GOKER.DEV
Visual Balance	Light Dominant	Light Dominant	Light Dominant

Primary site is missing a sitemap, limiting search engine discovery.

6. Panel Score Summary

Aggregate scoring across all analyzed panels.



PANEL	GOKER.ME	GOKER.ART	GOKER.DEV
Content Structure	50	65	60
Keyword Similarity	39	22	24
Technical Health	90	90	90
Accessibility	91	96	93
Performance (Lab)	84	84	86
Performance (Field)	-	-	-
Social Sharing	100	100	100
Visual System	70	70	70
Security & HTTPS	55	55	55
Domain Trust	80	70	50
UX & Conversion	60	45	45
Tracking & Privacy	50	50	50
Mobile Usability	50	48	50
OVERALL SCORE	68	66	64

7. Implementation Roadmap

This roadmap prioritizes the identified issues into a phased execution plan.

PHASE 1: CRITICAL FIXES (WEEK 1-2)

Address items that critically impact user access, SEO, or security.




-  **Fix Readability:** Content is very difficult to read (<40 Flesch). Simplify immediately.
-  **Fix Security Headers:** Missing critical headers (CSP, X-Frame-Options, X-Content-Type-Options, Referrer-Policy). Add to server config.

PHASE 2: OPTIMIZATION (MONTH 1)

Improve content quality, user experience, and technical refinements.

-  **Harden Security:** Implement basic CSP and then tighten to strict allowlist.

PHASE 3: GROWTH & MONITORING (ONGOING)

-  **Analytics Review:** Monthly review of traffic and conversion goals.
 -  **Content Updates:** Regular publication of new, high-quality content.
 -  **A/B Testing:** Experiment with different CTAs and layouts.
-

8. Appendices

APPENDIX A: METHODOLOGY

This report was generated using an automated diagnostic engine that analyzes: 1. **DOM Structure:** Raw HTML parsing for content and structure. 2. **Lab Performance:** Google Lighthouse (via automated browser). 3. **Field Performance:** Chrome User Experience Report (CrUX) API. 4. **Accessibility:** Axe-core engine for WCAG compliance. 5. **Technical Stack:** Header analysis and pattern matching. 6. **Visuals:** Color extraction and layout analysis.

Each panel score is a weighted composite of raw metrics relative to industry best practices.

APPENDIX B: GLOSSARY

- **FCP (First Contentful Paint):** Time until the first text or image is painted.
- **LCP (Largest Contentful Paint):** Time until the main content element is visible.
- **CLS (Cumulative Layout Shift):** Measure of visual stability (unexpected movement).
- **TBT (Total Blocking Time):** Time the main thread was blocked, delaying interaction.
- **Flesch Reading Ease:** Score 0-100 indicating readability (higher is easier).
- **WCAG:** Web Content Accessibility Guidelines.
- **Open Graph:** Meta tags that control how content appears on Facebook/LinkedIn.